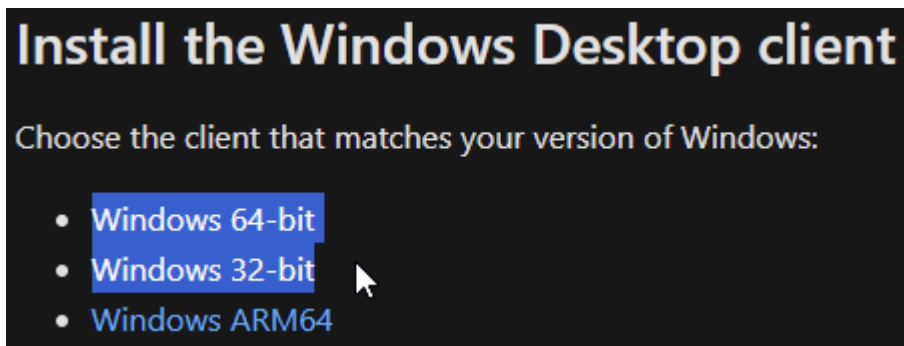


## Knowledge Base Article

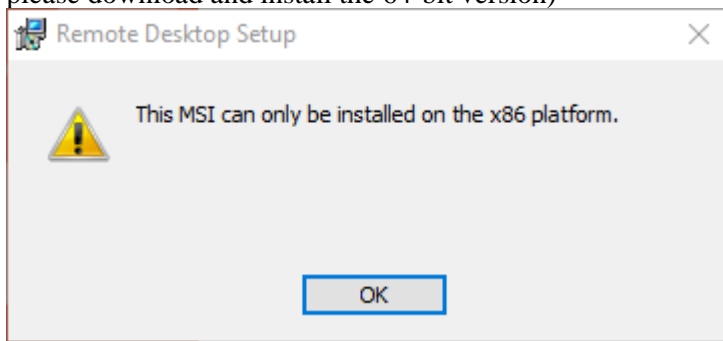
### Virtual Desktop Interface

#### Support Info:

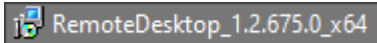
1. Open a web browser session and navigate to: <https://docs.microsoft.com/en-us/azure/virtual-desktop/connect-windows-7-and-10>
2. You'll be presented with a few options to download.
  - a. Windows 64-bit
  - b. Windows 32-bit



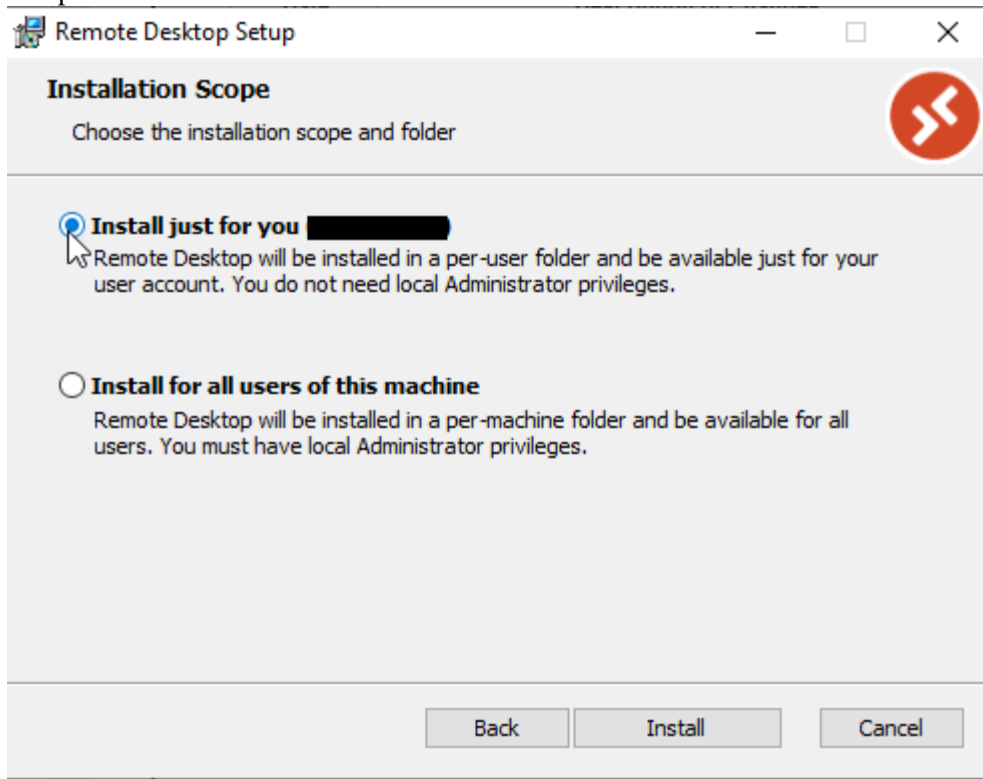
(If you know your version of windows, click the one that applies to you. If you are unsure of your version, click and download the 32-bit version first. If you see the following error during installation, please download and install the 64-bit version)



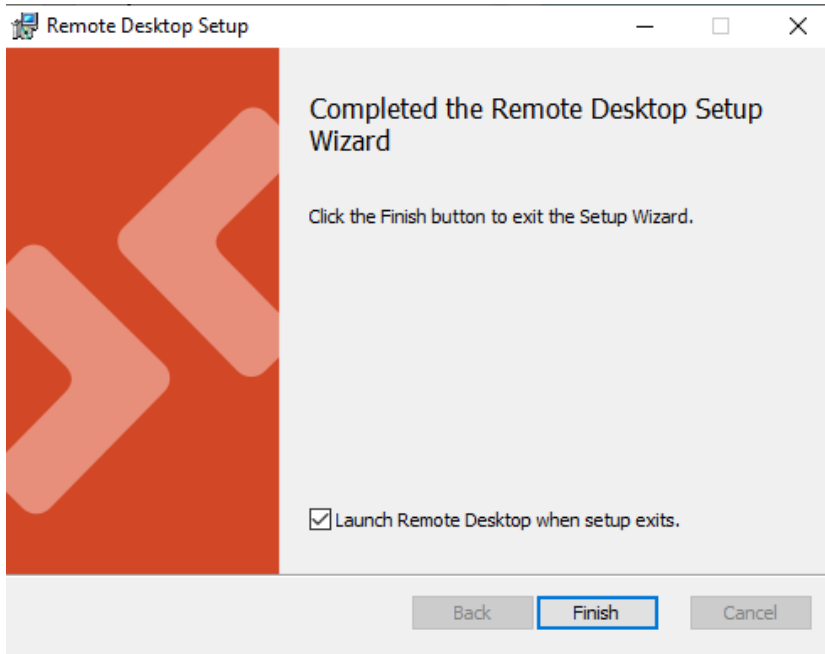
3. Once the software is downloaded, please double click it to begin installation



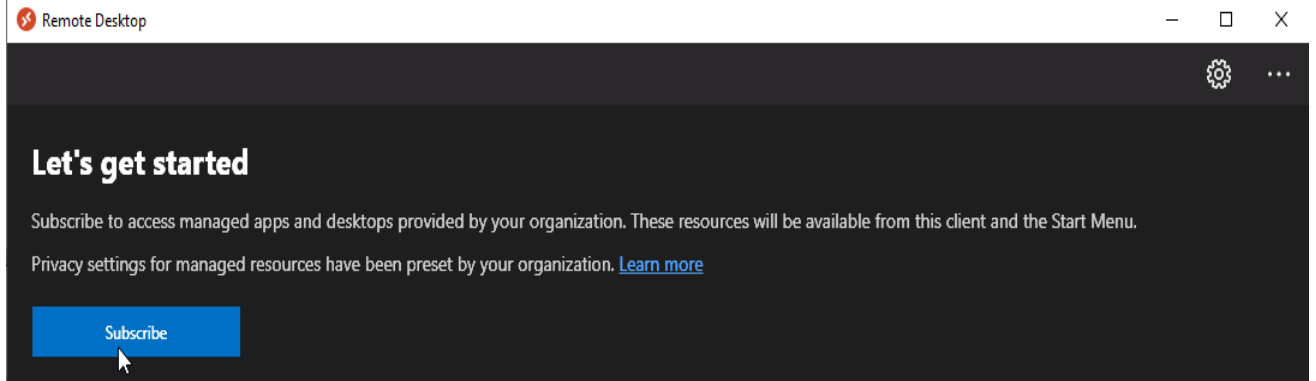
4. On the install screen, click “Next” and accept the terms and conditions. On the installation Scope screen, please select “Install Just For You” and click “Install”. You DO NOT need admin rights to your computer for this



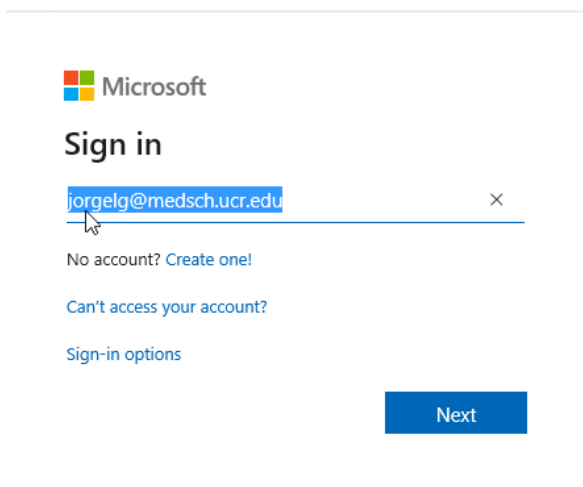
5. Once the installation process is complete, please make sure the “Launch Remote Desktop when setup exits” box is checked and click on “Finish”



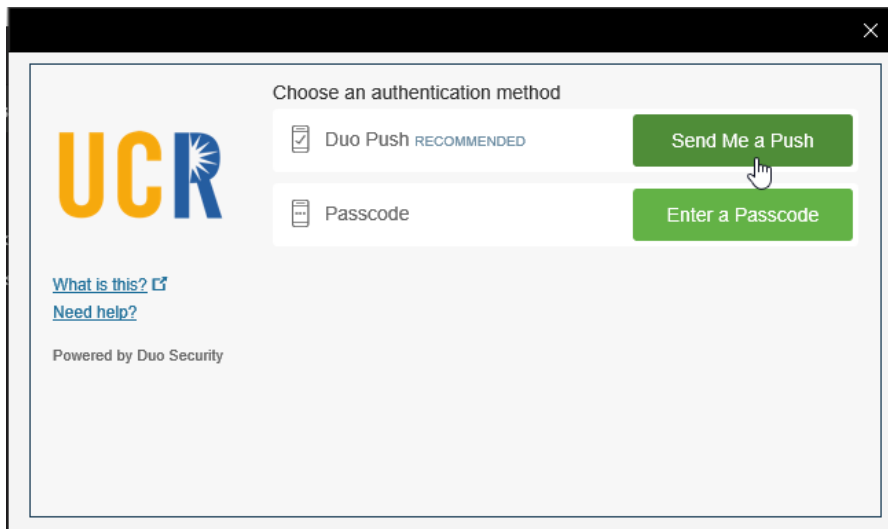
6. On the Remote Desktop screen that pops up, click on “Subscribe”



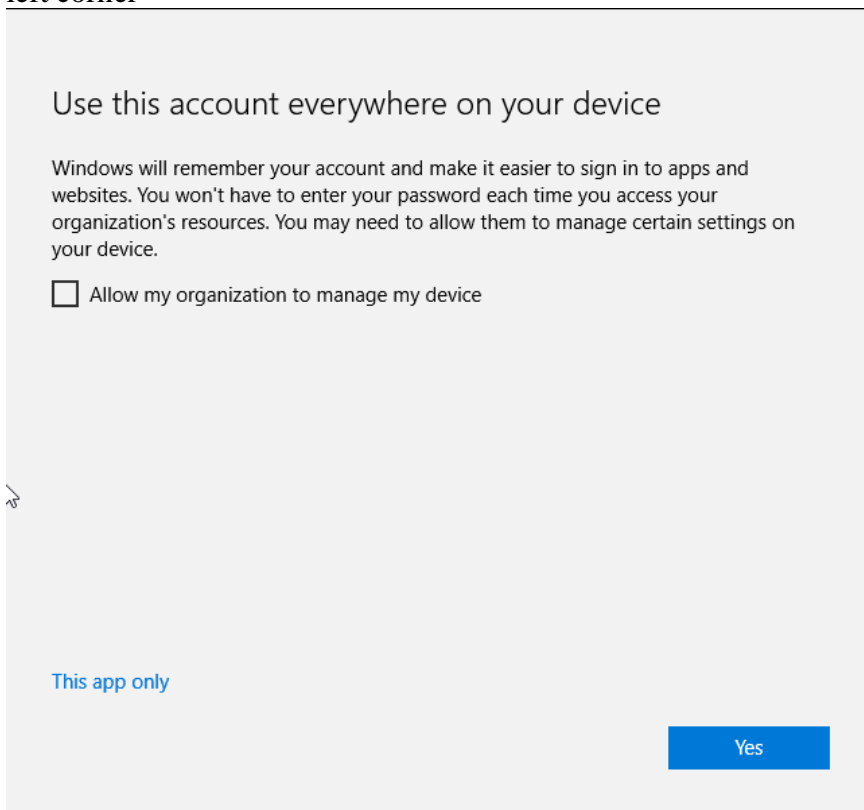
7. Next, you will sign in with your [netID@medsch.ucr.edu](mailto:netID@medsch.ucr.edu) as your username. Click next and enter your med school password.



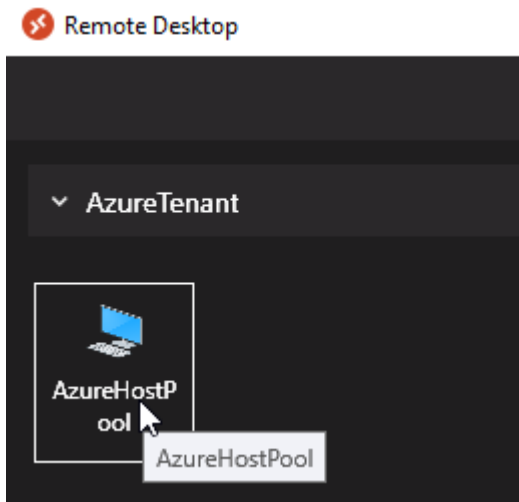
8. Next, you'll be prompted to authenticate with DUO. Please choose your method of authentication



9. On the next screen that pops up, you'll be asked to allow your organization to manage your device. DO NOT click "Yes". Uncheck the box and click "This app only" found on the bottom left corner



10. On the next screen, double-click on the “AzureHostPool” icon



11. Next, you will be prompted for your med school credentials. Your user name should already be pre-filled but if it's not, go ahead and enter it. REMEMBER, that your user name is your [netID@medsch.ucr.edu](mailto:netID@medsch.ucr.edu). Enter your med school password. Click “OK”



12. The VDI environment will take a few seconds to load. If you get an error regarding OneDrive, click “OK” and sign into OneDrive manually. REMEMBER, your username is your [netID@medsch.ucr.edu](mailto:netID@medsch.ucr.edu) and password is your med school password. You can also access your email through the embedded Outlook client. You'll be prompted to select your account and then click “Next”